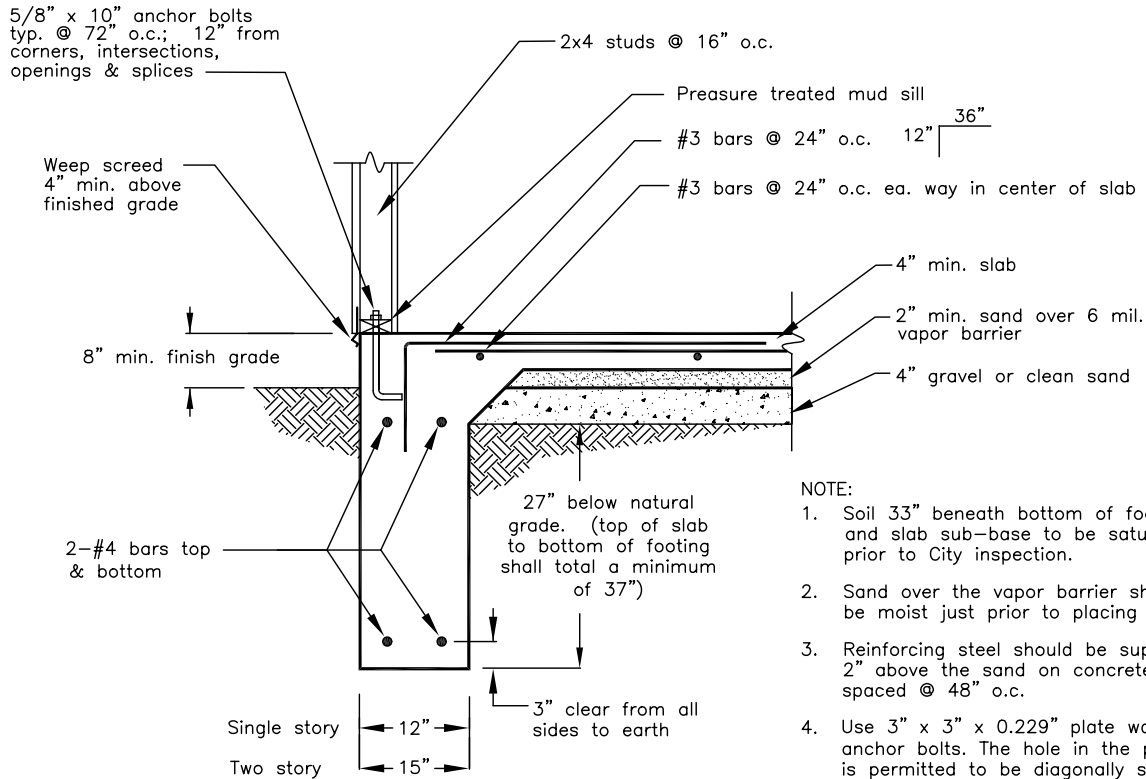
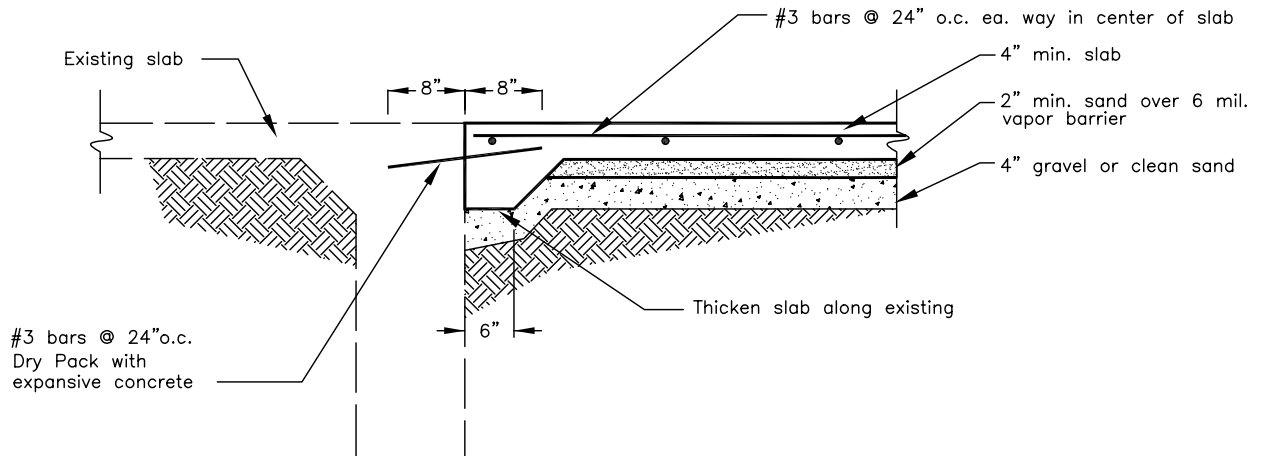


# CONVENTIONAL FOOTINGS & SLAB SYSTEM

## TYPICAL SECTION FOR EXPANSIVE SOIL E.I.=91-130



## ATTACHMENT BETWEEN EXISTING & NEW FOOTINGS/SLAB



**CITY OF THOUSAND OAKS**  
COMMUNITY DEVELOPMENT DEPARTMENT  
BUILDING DIVISION

Prepared by: Dragos Teodorescu P.E.

Approved by: Dave Hueners P.E.

Building Official

CONVENTIONAL SLAB & FOOTINGS  
ATTACHED TO EXISTING  
CONVENTIONAL SLAB

Sheet 1 of 1

January 2008

B-1