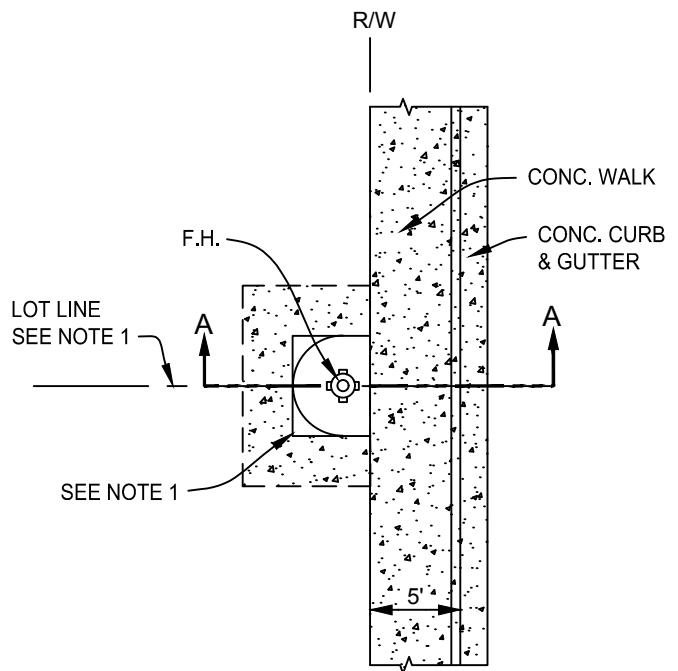
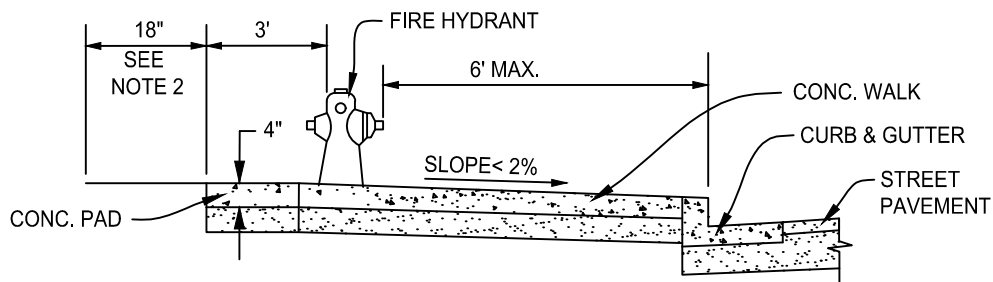


PLAN - F.H. AT B.C.R.
NOT TO SCALE



PLAN - F.H. ALONG STREET
NOT TO SCALE



SECTION A-A
NOT TO SCALE

NOTES:

1. THE PRECISE LOCATION OF F.H. RELATIVE TO THE LOT LINE OR THE B.C.R. OFFSET MAY BE SHIFTED UP TO 5' TO AVOID CONFLICT WITH STREET LIGHTS, MAIL BOXES OR DRIVEWAY APPROACHES (PROVIDE 4' CLEARANCE FROM THIS IMPROVEMENTS).
2. LOCATION OF F.H. MUST BE APPROVED BY VENTURA COUNTY FIRE PROTECTION DISTRICT.
3. SEE CITY OF THOUSAND OAKS WATER DESIGN STANDARDS FOR ADDITIONAL LOCATION REQUIREMENTS.
4. NO SHRUBS, BUSHES OR IMPROVEMENTS EXCEEDING 6" IN HEIGHT WITH THIS AREA..
5. 8" CIRCULAR OR RECTANGULAR CONFIGURATION FOR CONCRETE PAD.
6. 4' SQUARE EASEMENT TO CITY OF THOUSAND OAKS FOR WATER IMPROVEMENTS IS REQUIRED.

CHANGE	DESCRIPTION	DATE	INITIAL

APPROVED:  
CITY ENGINEER DATE