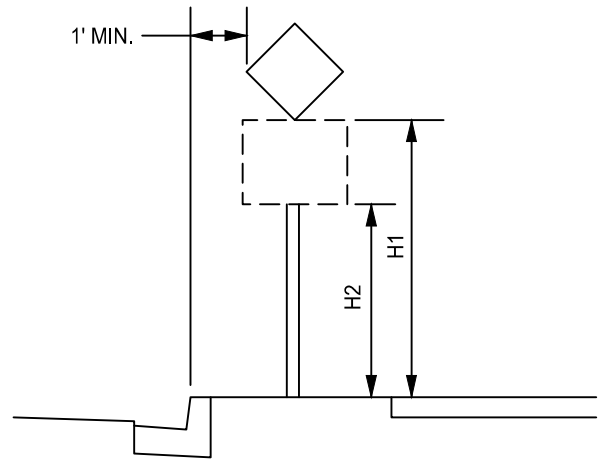
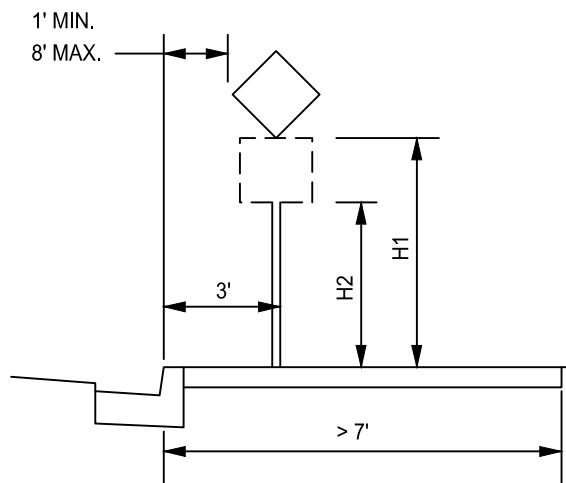


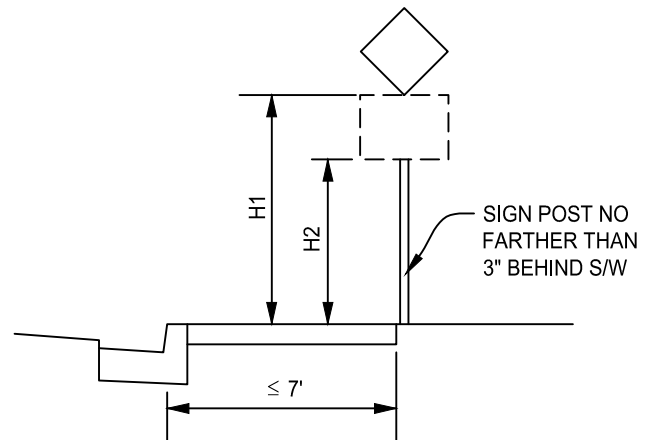
LOCATIONS WITHOUT CURBS



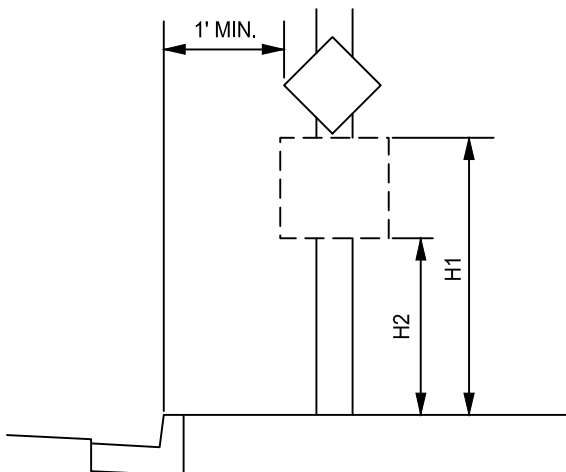
PARKWAYS



MONOLITHIC SIDEWALKS



DETAIL
NOT TO SCALE



ELECTROLIERS

NOTE:

SIGNS SHALL BE INSTALLED WITH A MINIMUM VERTICAL CLEARANCE (H1) OF SEVEN (7) FEET. IF TWO SIGNS ARE MOUNTED ON THE SAME POST, THE MINIMUM VERTICAL CLEARANCE (H2) SHALL BE 80". SIGNS SHALL BE MOUNTED ON ELECTROLIERS WHEN POSSIBLE. IF SIGN LOCATION REDUCES THE REQUIRED 4' MIN. WIDTH OF ACCESSIBLE PATHWAY, PROVIDE SIDEWALK EXTENSION PER PLATE NO. 8-9. MOUNT SIGNS WITH OFFSET BRACKETS ARE NEEDED.

CHANGE	DESCRIPTION	DATE	INITIAL

APPROVED:  
CITY ENGINEER DATE



CITY OF THOUSAND OAKS
PUBLIC WORKS DEPARTMENT

STANDARD
LOCATION OF SIGNS ON
RIGHT SIDE OF ROADS

PLATE NO.
7-9