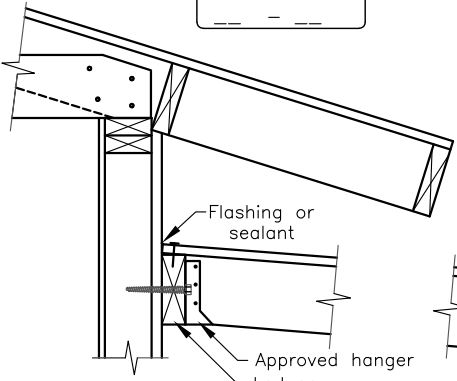
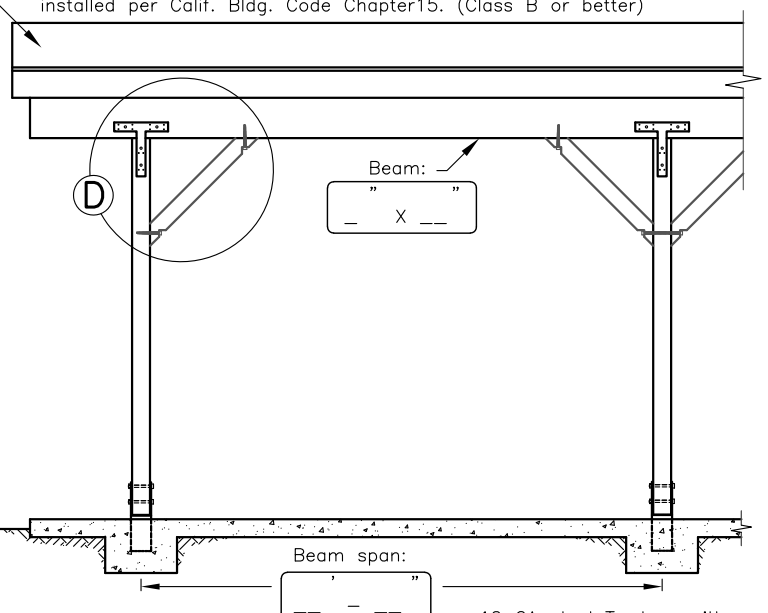
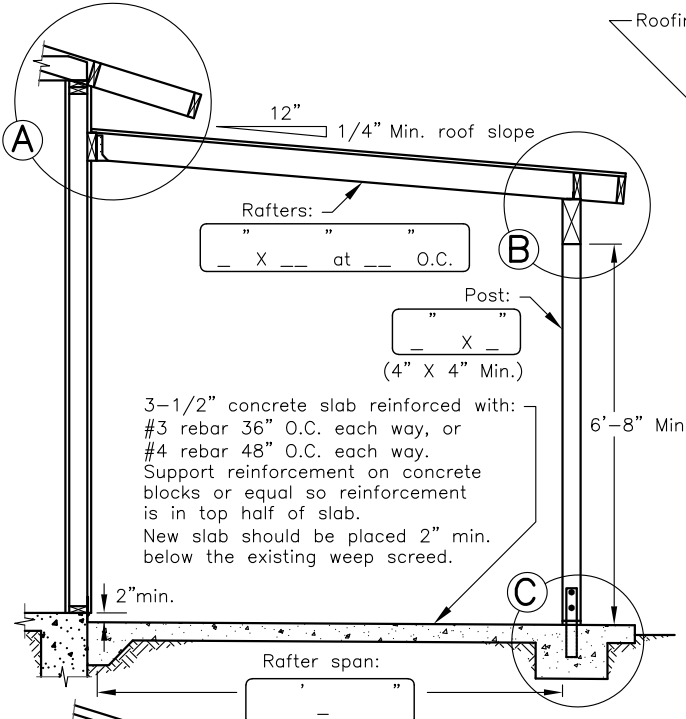
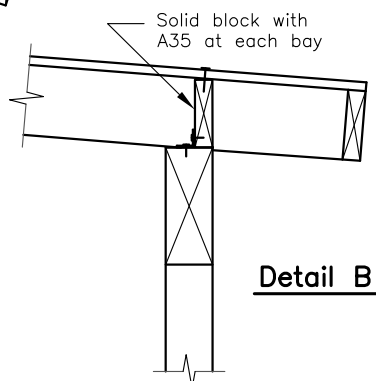


Roofing: - Lattice roofing - 2"X (see note #2)
 - Solid roofing - 1 5/8" wood structural panel sheathing nailed @ 6" O.C. edges, 12" o.c. field with 8d nails. (Max. rafter spacing: 24" O.C.) with mineral-surfaced rolled roofing or other approved roofing material installed per Calif. Bldg. Code Chapter 15. (Class B or better)

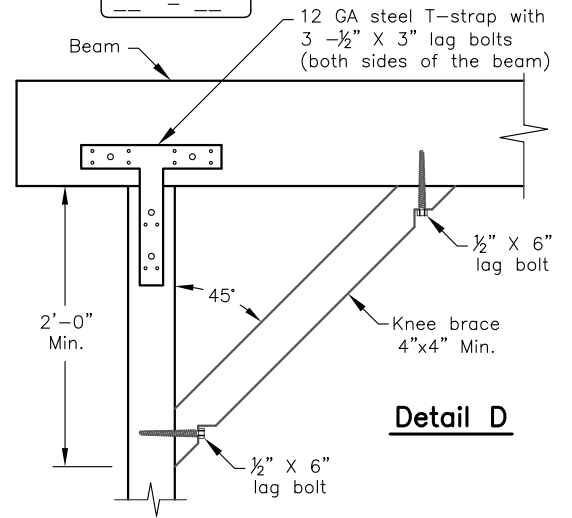


Detail A

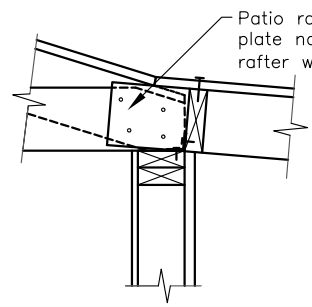
2" X ___
 with 3/8" X 5" lag bolts @ 16" O.C. into wall framing



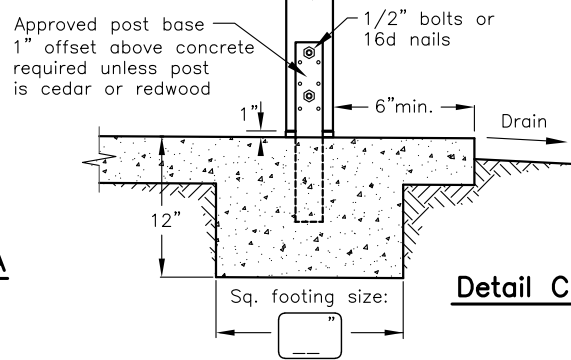
Detail B



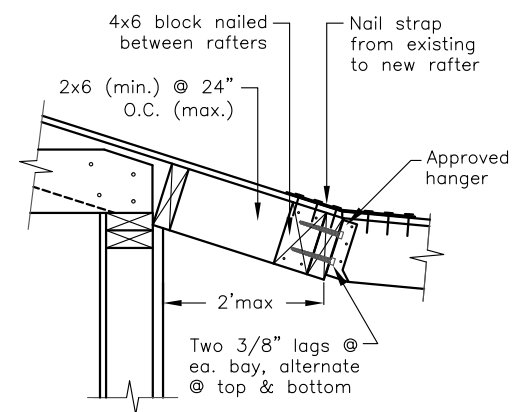
Detail D



Alternate 1 to Detail A



Detail C

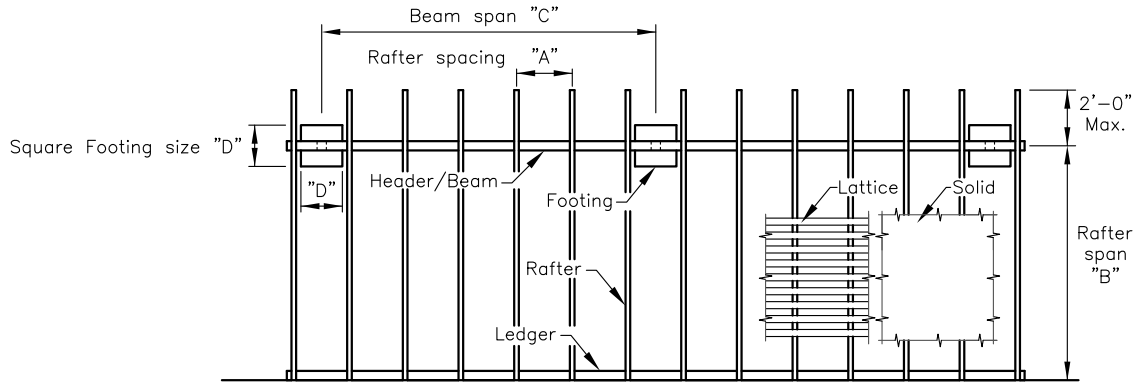


Alternate 2 to Detail A



CITY OF THOUSAND OAKS
 COMMUNITY DEVELOPMENT DEPARTMENT
 BUILDING DIVISION

**PATIO COVER
 FRAMING DETAILS, SPAN TABLES**



Patio Cover Roof Rafters Span Table
(DL=7PSF, LL=10PSF)

Rafter Size (in.)	Rafter Spacing (in. O.C.) "A"	Rafter Span (ft.) "B"
2X4	12"	11'-3"
	16"	10'-3"
	24"	9'-0"
2X6	12"	17'-9"
	16"	16'-3"
	24"	14'-3"
2X8	32"	12'-3"
	12"	23'-6"
	16"	21'-6"
2X10	24"	18'-0"
	32"	15'-6"
	12"	30'-0"
4X4	16"	27'-0"
	24"	22'-0"
	32"	19'-0"
4X6	24"	12'-0"
	32"	10'-9"
	36"	10'-6"
4X8	48"	9'-6"
	24"	18'-9"
	32"	17'-0"
4X6	36"	16'-6"
	48"	15'-0"
	24"	24'-9"
4X8	32"	22'-6"
	36"	21'-9"
	48"	19'-9"

Patio Cover Beam Span and Footing Table
(DL=7PSF, LL=10PSF)

Beam Size (in.)	Rafter Span (ft.) "B"	Beam Span (ft.) "C"	Square Footing Size (12" deep) (in.) "D"
4X4	10'	7'-9"	12"X12"
	15'	6'-9"	16"X16"
	20'	6'-0"	16"X16"
4X6	25'	5'-6"	16"X16"
	10'	11'-6"	18"X18"
	15'	9'-9"	16"X16"
4X8	20'	8'-9"	18"X18"
	25'	8'-0"	18"X18"
	10'	15'-0"	18"X18"
4X10	15'	13'-0"	18"X18"
	20'	11'-6"	24"X24"
	25'	10'-6"	24"X24"
4X12	10'	18'-6"	24"X24"
	15'	16'-0"	24"X24"
	20'	14'-3"	24"X24"
6X8	25'	13'-0"	24"X24"
	10'	21'-6"	24"X24"
	15'	18'-6"	24"X24"
6X10	20'	16'-6"	24"X24"
	25'	15'-0"	24"X24"
	10'	17'-3"	18"X18"
6X12	15'	14'-9"	24"X24"
	20'	13'-3"	24"X24"
	25'	12'-0"	24"X24"
6X10	10'	21'-9"	24"X24"
	15'	18'-9"	24"X24"
	20'	16'-9"	24"X24"
6X12	25'	15'-3"	24"X24"
	10'	26'-3"	24"X24"
	15'	22'-9"	24"X24"
6X12	20'	20'-3"	30"X30"
	25'	18'-6"	30"X30"
	10'	17'-3"	18"X18"

- Note: 1. All lumber to be Douglas Fir #2 or better
 2. Lattice Span: 2X2 max. span 4'-0"
 2X3 max. span 7'-0"
 3. Nails and bolts to be corrosion resistant

PATIO COVERS are one story structures not exceeding 12 feet in height. Enclosure walls shall be permitted to be of any configuration, provided the open or glazed area of the longer wall and one additional wall is equal to at least 65 percent of the area below a minimum of 6 feet 8 inches of each wall, measured from the floor. Openings shall be permitted to be enclosed with insect screening, approved translucent or transparent plastic not more than 0.125 inch in thickness, glass conforming to the code provisions or any combination of the foregoing.



CITY OF THOUSAND OAKS
 COMMUNITY DEVELOPMENT DEPARTMENT
 BUILDING DIVISION

**PATIO COVER
 FRAMING DETAILS, SPAN TABLES**