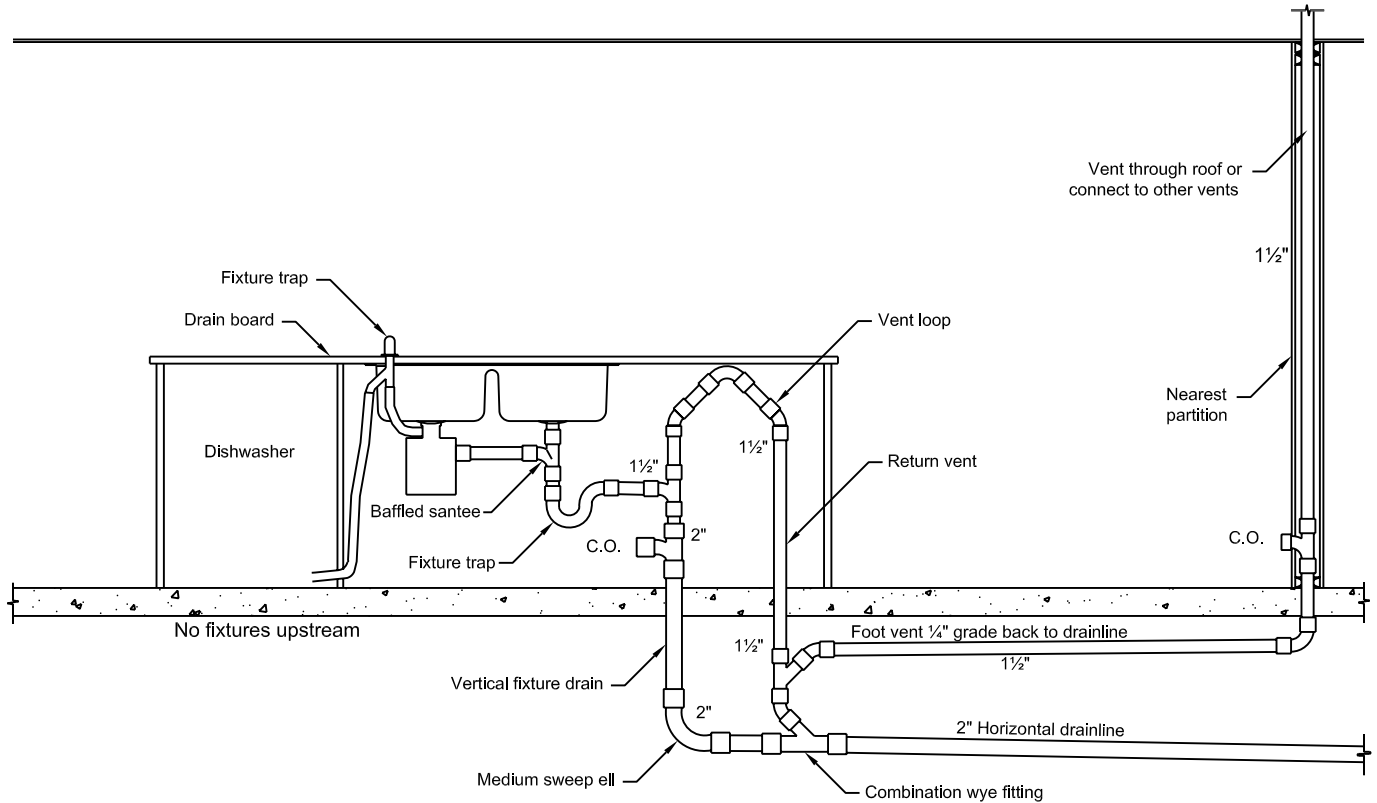


SPECIAL VENTING FOR RESIDENTIAL ISLAND FIXTURE CPC SECTION 909



1. Each island vent shall serve only one fixture.
2. All fittings for the loop vent, foot vent, and return vent shall be drainage type fittings.
3. The loop bend shall consist of one fitting or one 1/4 bend and two 1/8th bends. It shall rise as high as possible before turning downward.
4. The return vent shall connect to the horizontal drain directly below the connection between the return vent and the foot vent with a wye type fitting.
5. The foot vent shall extend from the return vent in the vertical position immediately below the floor with a wye type fitting.
6. The foot vent shall extend from the return vent to a point immediately below the floor with a wye type fitting.
7. Cleanouts shall be provided in the drain below the fixture trap and in the vertical part of the foot vent above the floor.



CITY OF THOUSAND OAKS
COMMUNITY DEVELOPMENT DEPARTMENT
BUILDING DIVISION

Prepared by: Rigoberto Barrera
Approved by: Dave Hueners P.E.
Building Official

Dave Hueners

**RESIDENTIAL KITCHEN ISLAND
SINK DRAIN**

Sheet 1 of 1

February 2010

P-7